



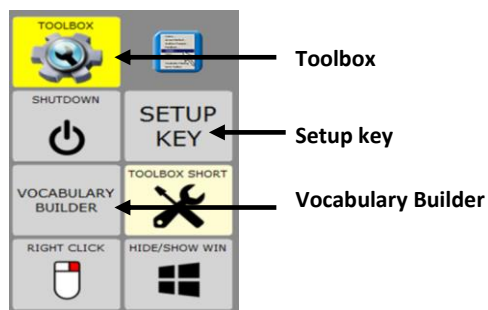
Vocabulary Builder (VB) for Unity Quick Reference Guide

Software version 2.08 or higher


Find your local consultant at...

www.liberator.net.au

info@liberator.net.au



User Keys

To access the User Keys above, select **Tools**  in the top right-hand corner of the screen.

Unity is a way to organize vocabulary and language on PRC devices. It was created to both follow and enable language development.


Vocabulary Builder is a therapeutic tool designed to teach new vocabulary within **Unity 28, 36, 45, 60, and 84 Sequenced**. The strategy of *masking* vocabulary allows support staff to teach a small amount of vocabulary on the device while keeping learned motor plans constant.




VB OFF

VB ON

TURN VOCABULARY BUILDER ON/OFF

1. Select **Tools** .
2. Select **Vocabulary Builder**.
3. Select **Vocab Masking ON** or **Show All Words (OFF)**.

When Vocabulary Builder is turned ON,  will appear in the status area.

Select **Show All Words** to quickly bring back all vocabulary.


SPELL TO MAKE A SET	MASKING ON THE FLY	MERGE WORD FINDER	MERGE KEY-BOARD	VOCAB MASKING ON	SHOW ALL WORDS	COMB
ABOUT ACTIVITY SETS	cars	bubbles	animals	house	toy car	play-doh
At play	No Peasas	dress up	baby dolls	dollhouse	things you ride	
At home	Legos	turn taking games	puzzles	spin top	MERGE activity set	
At school						
Build your own						
CLEAR						

ACTIVITY SETS



Select an activity to temporarily limit the vocabulary to a set of words related to that activity. Each set contains a variety of parts of speech such as verbs, adjectives, prepositions, and interjections. The words in each set allow an individual to request the activity, talk during that activity, and end it. The activities are broken up into three categories: At Play, At Home and At School.

Typically, someone cannot speak throughout a day with words from a single activity set. Use these sets as a starting point.

To change to a different set:

1. Select **Tools** .
2. Select **Vocabulary Builder**.
3. Select your desired set.



To add another set of words to an existing set:

1. Select **Tools** .
2. Select **Vocabulary Builder**.
3. Select the category of the set you would like to merge—**At play, At home** or **At school**.
4. Select **Merge Activity Set** .
5. Select your desired activity to merge.


For example, to have words for bubbles and cars at the same time, first load the bubbles set, and then merge in the cars set. Merge always adds to your existing set.

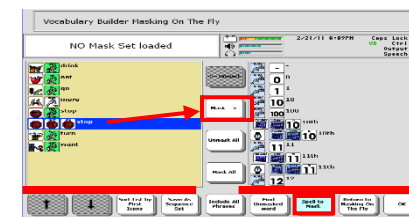
BUILD YOUR OWN SET

With this method you are combining pre-made sets to make your own unique set.

1. Select **Tools** .
2. Select **Vocabulary Builder**.
3. Select **Build Your Own**.
4. Select a set of words. For example, **First Words 50**.
5. Then add additional sets of words (for example from categories—foods, animals, and colors) by selecting **Tools**, **Vocabulary Builder**, **Build Your Own**, and **Merge Set** . Then select the set to merge. Repeat this step for every set you would like to merge.
6. When complete, see **Saving a Set** on page 2.


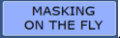
SPELL TO MAKE A SET

1. Select **Tools** .
2. Select **Vocabulary Builder**.
3. Select the **Spell to Make a Set**.
 - A. If you are **not** currently using VB, select **Mask All**.
 - B. If you **are** currently using VB and want to add a few more words, go to step 4.
4. Make sure the list to the right is tan by tapping it.
5. Select **Spell to Unmask**.
6. Type word(s) to unmask using commas to separate the words.
7. Select **OK** when finished.
8. On the left-hand side are all of the words that will be available. There may be some words that are listed twice. That is because the word is stored in different locations. If so, you can remove an unwanted sequence by selecting it and then select **Mask**.
9. When finished select **OK**.



MASKING ON THE FLY (MOTF)

MOTF is another way to quickly make a set of words. Use this method if you know where the word(s) is located in Unity. Select icon sequences to unmask words.

1. Select **Tools** 
2. Select **Vocabulary Builder**.
3. Select **MOTF** 
 - A. If you are **not** currently using VB, select **Mask All**.
 - B. If you **are** currently using VB and want to add a few more words, go to step 4.
4. Select the sequence(s) needed for the word(s) you wish to unmask. For example:



5. Select the text area (grey bar at the top) to exit.


MOTF – USING THE NAVIGATE FUNCTION

Use the **Navigate** function to unmask words in activity subcategories (for example, foods—fruit) or to make the function on a key active (for example, Go Back, More).


1. Follow the example below to navigate into subcategories to select a word such as “banana”:
 - a. Once in **Masking on the Fly**, select the apple from the core area, and then select the subcategory **Fruit**.
 - b. Select **Navigate** and touch the Fruit category again.
 - c. Select **banana**.
2. Either continue unmasking more vocabulary or select the text area (grey bar at the top) to exit.



SAVING A SET

1. Have your desired set created and in use.
2. Select **Tools** 
3. Select **Vocabulary Builder**.
4. Select **Build Your Own**.
5. Select **Save My Set**. Type a name for your set.
6. Select **OK** twice.

LOADING A SET

1. Select **Tools** 
2. Select **Vocabulary Builder**.
3. Select **Build Your Own**.
4. Select **Load My Set**. Select the set to load.
5. Select **OK** twice.

TIP:

Learn: Register for a variety of online **AAC implementation classes** at...
www.prentrom.com/training/go/implementation_classes

Teach: Find a vast library of **therapy materials** at...
www.AACLlanguageLab.com

Accelerate: Monitor **progress** and **language growth**...
www.realizelanguage.com

Additional TIPS!

MERGE WORD FINDER

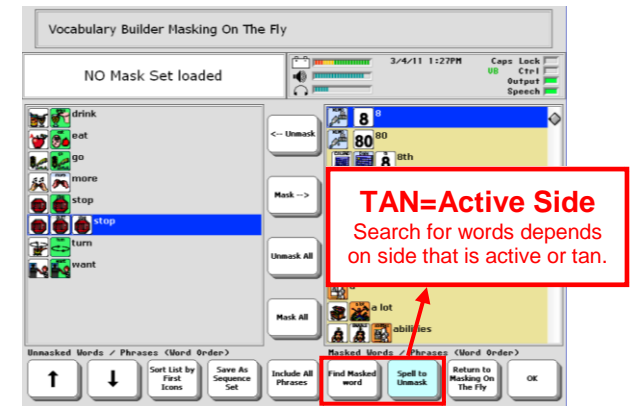
To add Word Finder to any set, simply select **Merge Word Finder**.

MERGE KEYBOARD

To add a keyboard for spelling to any set, simply select **Merge Keyboard**.

ACTIVE SIDE WHEN SPELLING

When changing between spelling and MOTF, or when adding additional words to an existing set, you may notice the tan background changes sides. Be sure the list you are searching always has the **tan** background. Touch the side to make it tan/active.



INCLUDING ALL PHRASES

When the set contains some pronouns and some preverbs (I, you, want, like), the **Include All Phrases** button will automatically capture any phrases that can be made from the words selected.