

Accent[®]: LAMP Words for Life[®] Quick Reference Guide



THINGS TO KNOW:
OK will save menu changes;
Cancel will escape out of menus;
Go to Home in the toolbox will exit to the vocabulary.

POWER/SLEEPBUTTONS

1. To power on the device, press and hold the button.
2. To wake the device from sleep, press the power/sleep button.
3. The device should be restarted weekly. *To restart, select **Tools > Toolbox > Maint Menu > Power Management > Restart** and select **Yes**.
4. If you don't plan to use the device, want to store/transport it in a bag, or receive an error message, shut down the device completely. To do this, select **Tools, Shutdown**, and then **Yes**.

* **Recommended: restart once per week; put to sleep daily.**

LOADING LAMP WORDS FOR LIFE VOCABULARIES

1. Select **Tools > Toolbox > User Area Menu**.
2. Select **Replace User Area** and select the area to replace.
NOTE: replacing a user area will *OVERWRITE* the existing area. Be sure the area is saved if there is content you don't want to lose!
3. Select **Pre-defined Vocabularies > English > LAMP WFL**.
4. Select **1-Hit, Transition, or Full** and answer **YES**.
5. Type the word replace and select **OK**. Answer **YES** if prompted to switch to this user area.
6. Select **OK** through the menus to access vocabulary.

CHANGING THE VOICE

1. Select **Tools > Toolbox > Speech Menu**.
2. Select **Change Voice**.
3. Select the desired voice. Wait for it to load. To listen to the voice, select **Test Speech**. Adjust rate, bass, and treble, as needed.

PRONUNCIATION DICTIONARY

"Teach" the device to pronounce a word correctly.

1. Select **Tools > Toolbox > Pronunciation Dictionary**.
2. Choose **Main Voice**.
3. Select **Add Pronunciation**.
4. Enter the correct spelling of the word. Select **OK**.
5. Enter the "phonetic spelling" of the word. To test the pronunciation, touch the message window. Select **OK**.

VOCABULARY BACK UP

1. Insert a USB flash drive into the USB port.
2. Select **Tools > Toolbox > Transfer Memory Menu**.
3. Select **Save One User Area** followed by the area you want to save or **Save Entire Device Contents**.
4. Make sure the pre-set folder is the USB drive and select **OK**. If not, select **Choose Different Folder** and navigate to the USB drive. Select **OK** and type the name for the file.
5. Select **OK** and wait for the transfer. Select **OK** when finished.

DISABLING THE TOOLBOX

To *disable* the toolbox:

1. Select **Tools > Toolbox > Maintenance Menu**.
2. Select **Disable Toolbox** and **Disable** under **Toolbox**. Enter a password and select **OK** to disable the toolbox.
3. Remember your password. (See "Create Toolbox Disable Override" below).

To *enable* the toolbox:

1. Select **Tools**.
2. Enter your password and select **OK**.
3. Select **Toolbox**.
4. Select **Maintenance Menu**.
5. Select **Disable Toolbox** and **Enable** under **Toolbox**.

Additional Options:

1. Select **Tools > Toolbox > Maintenance Menu > Disable Toolbox**.
2. **Create Toolbox Disable Override:** Select this option and then insert a USB flash drive. The override will be placed on the flash drive. Select **OK**. The device will "unlock" anytime this USB drive is plugged into the device without the need to enter a password.
3. Enable or Disable **On-Screen Tools Key, Help Button, and/or Pulldown Menu Button**.

EDITING A KEY

1. Be sure you are looking at the key you want to edit. Select **Tools**, and then **Setup Key**.
2. Touch the key you want to edit.
3. Select **Change Icon**. Then do one of the following:
 - A. Spell Icon to Find.** Spell what you are looking for. Select **OK**. Touch the icon you want.
 - B. Take Picture.** Frame picture, then select **Take Picture**. Select **Save as Icon**. **Rename Icon**. Select **OK**.
 - C. Plug a USB flash drive with photos on it into the device.** Select **Import Icon**. If the content of the flash drive is showing, touch the photo you want to import. If not, select **Up Folder** to navigate to the flash drive, and then touch the photo you want. Select **OK** and **OK**. The photo will be placed on the key and in the imports folder of the icon dictionary.
 - D. Search for an icon by category.**
4. Look to see if the "text to speak" is correct. If not, select **Spell Message** or **Define Key Function** to type text that will appear in the display and be spoken. Be sure to put a *space* after the last character. Select **OK**.
5. Check to see if the label is correct. If not, select **Change Label**, type a new label, and select **OK**.
6. Select **OK** or **Choose Next Key to Define**.

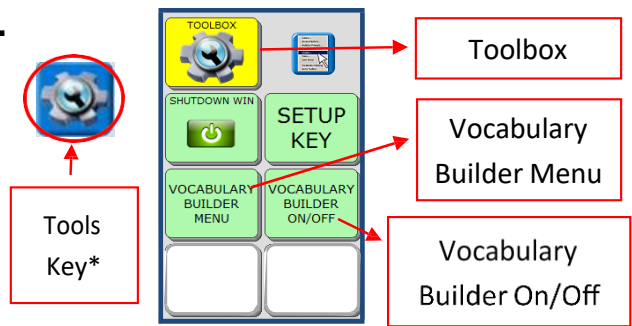
CREATING and LINKING PAGES

1. Be sure you're looking at the key you want to link to the new page. Select **Tools**, followed by **Setup Key**, and the key to link to new page.
2. Select **Change Icon** to search for an icon.
3. Select **Spell Message** or **Define Key Function**.
4. Select **Clear** followed by **Page Link** and **CLOSE**.
5. If the page is already created, find and select it from the menu; if it is not already created, select **Create New Page**, type the name for the page, select **OK**, and choose keyboard size 84. Select **OK** two times.
6. Select **Change Label** to change the label on the key. Labels for page links are typically in all CAPS. Select **OK**.
7. Select **OK** to exit when finished.

Vocabulary Builder for LAMP WFL

Accent® 700, 800, 1000, 1200, or 1400 (version 2.04 or higher)
LAMP 84 1-Hit, Transition, Full Vocabularies

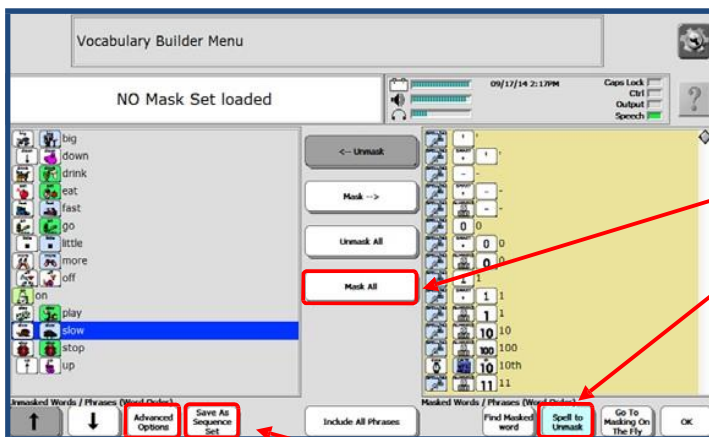
Vocabulary Builder is a therapeutic tool designed to teach new words within the LAMP Words for Life® vocabulary. The strategy of “masking” vocabulary allows a small amount of vocabulary to be taught on the device while keeping learned motor plans constant.



Turn Vocabulary Builder On/Off

1. Select the **TOOLS** key.
2. Select **TURN VOCABULARY BUILDER ON/OFF**.

When Vocabulary Builder is ON, **VB** will appear in the status display.



How to create a set of words:

1. Select the **TOOLS** key.
2. Select **VOCABULARY BUILDER MENU**.
3. Select **MASK ALL**. **
4. Select **SPELL TO UNMASK**.
5. Type the word(s) to unmask using commas to separate words.
6. Select **OK**.
7. Select **OK** to exit the VB Menu.

**Skip this step if you are adding words to an existing set.

Active Side When Spelling

When adding additional words to an existing set, make sure the right side has a tan background. Tap the right side to turn it from gray to tan.

Remember to follow the child’s lead!

Use sequence sets to isolate words you intend to teach in structured or one-on-one activities. Add or change words frequently as the activity changes and turn Vocabulary Builder on/off as needed during unstructured time so the individual has an opportunity to independently explore. Remember to choose words that can easily generalize from one activity to another.

Saving Sets

If you intend to keep the sequence sets you have built, you need to **SAVE** them!!

1. Select the **TOOLS** key.
2. Select **VOCABULARY BUILDER MENU**.
3. Select **SAVE AS SEQUENCE SET**.
4. Type the name for the sequence set.
5. Select **OK 2 times**.

Loading Sets

After creating a sequence set, it can be retrieved from the **VOCABULARY BUILDER MENU**.

1. Select the **TOOLS** key.
2. Select **VOCABULARY BUILDER MENU**.
3. Select **ADVANCED OPTIONS**.
4. Select **USE SEQUENCE SETS**.
5. Select **LOAD SEQUENCE SET**.
6. Choose the desired set.
7. Select **OK 2 times**.